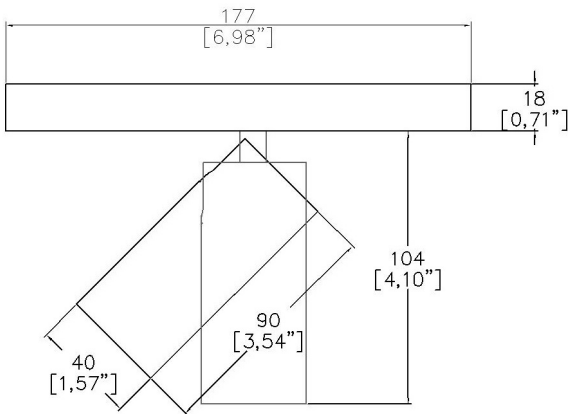


ProSpex TubeLED Micro

TM65.2	6kgCO2e
TM66	2.2 CEAM



40mm (1.57”) overall diameter. Miniature low voltage LED tubular spotlight. Available with monopoint mounting or magnetic track adaptor. Family of matching products also available.



6100-LED-LVTR

LED Source	LED	LED	LED
CCT	3000K	3000K	3000K
Drive Current	350mA	350mA	350mA
Supply Voltage	48v	48v	48v
Power inc Driver	7.4W	7.4W	7.4W
Beam Angle	15°	24°	36°
Delivered Lumens	511	478	439
Delivered Intensisty cd	3478	2348	1344
Efficacy lm/w	69	64	59
Forward Volt	18V	18V	18V
CRI	≥90 CRI	≥90 CRI	≥90 CRI

Apply these factors to 3000K for lumen output of other CCTs: 2200K x 0.65 / 2400K x 0.69 / 2700K x 0.941 / 4000K x 1.065.

Project Ref: _____ Location Ref: _____

Fixture Order Code: **6100-LED** - - - - - - - **LVTR**

Fixture	_____
6100-LED	TubeLED Micro
CCT	_____
22***	90 CRI 2200K***
24***	90 CRI 2400K***
27	90 CRI 2700K
30	90 CRI 3000K
40***	90 CRI 4000K***
Beam	_____
15	15°
24	24°
36	36°
Protocol	_____
S	Non-Dim
A	Analogue (0-10v)
D	DALI
B	Bluetooth**
Colour Insert	_____
SN	Satin Nickel
SG	Satin Gold
CP	Copper
BZ	Bronze
(Blank)	Not required standard black to be supplied
Finish	_____
WH	White
BK	Black
RAL*	Custom RAL Colour*
ABR1	Antique Brass
ABZ1	Antique Bronze
PCH1	Polished Chrome
PNK1	Polished Nickel
PBR1	Polished Brass
Fixing	_____
LVTR	Low Voltage Track Adaptor

Please refer to installation instruction for wiring diagram

***contact Lucent for availability

Finish selection



Antique Brass



Antique Bronze



Polished Brass



Polished Nickel



Polished Chrome

Accessories



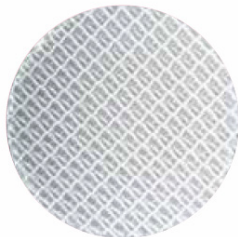
Honeycomb Louvre



Diffusing Lens



Frosted Lens



Heavy Spread Lens



Linear Spread Lens

Accessories Order Code:

Fixture

- LS45-33mm
- LSCC-33mm
- LSUV-33mm
- LSDF-33mm
- LSFR-33mm
- LSLS-33mm
- LSHS-33mm

- Honeycomb
- Warm Tone
- UV
- Solite/Diffusing
- Frosted Lens
- Linear Spread
- Heavy Spread

Technical Details

*Custom RAL code must be specified. Custom RAL colours can increase prices and lead times

Dimming. Whilst Lucent can offer the majority of its luminaires with various dimming options, it remains the responsibility of the specifier/installer to check and ensure compatibility of any control equipment used. Additional cabling may be required depending on the dimming protocol specified.

**Bluetooth (wireless) is the communication method. The exact dimming protocol must be confirmed to allow the selection of suitable drivers or bluetooth devices.

^ Depth indicated is the minimum recess depth for the luminaire with a remote mounted LED driver. Installing a driver through either the luminaire cut-out or installation kit may require additional recess depth, please refer to the relevant luminaire installation instructions for further details.Data correct at time of publishing

First Fix Requirement. Luminaire comprised of fixture body with ceiling trim and installation kit, which is to be fitted into the ceiling once finished. Ensure correct alignment of the installation kit before final assembly (see luminaire instllation instructions for details)

IP Rating. Tested from underside of the ceiling

Note that the picture of the finishes provided is for illustrative purposes only. The finishes may vary in colour, texture and appearance. Contact Lucent lighting Ltd for more information.

It is the policy of Lucent Lighting to continually review and improve its products and therefore reserve the right to change any details of product or withdraw specifications without prior notice.

Luminaires designed to comply with EN60598 and all other standards.

This specification sheet superseded all previous versions.

All intellectual property rights pertaining to the product described above and to this document are owned by or licensed to Lucent Lighting Ltd.

We reserve the right to take whatever action is necessary to protect those intellectual property rights.

Please notify Lucent Lighting Ltd of any inaccuracies immediately. E&OE